

MOON OF HOPE IN REVIEW



THE MOON OF HOPE
A VOICE FOR THE VOICELESS

Annual report
2022-2023





Message from the CEO

As we reflect on the past year, we are filled with gratitude and awe for the unwavering support we have received from our incredible community of donors and volunteers. Your generosity and dedication have been the driving force behind our success. Thank you for believing in our mission and contributing to the positive impact we strive to make.

Board of Directors

Dina Philosca
Founder / CEO

Tyler Newman
Founding Board Member / Board
Secretary

Jessenia Marrero
Board Member

Revenue & Donations

Between Moon of Hope's inception in 2022 through the end of 2023 our organization brought in a combine total of \$6,127.31. These funds came from board member contributions, gifts in-kind, in-kind goods and a fund raising event.

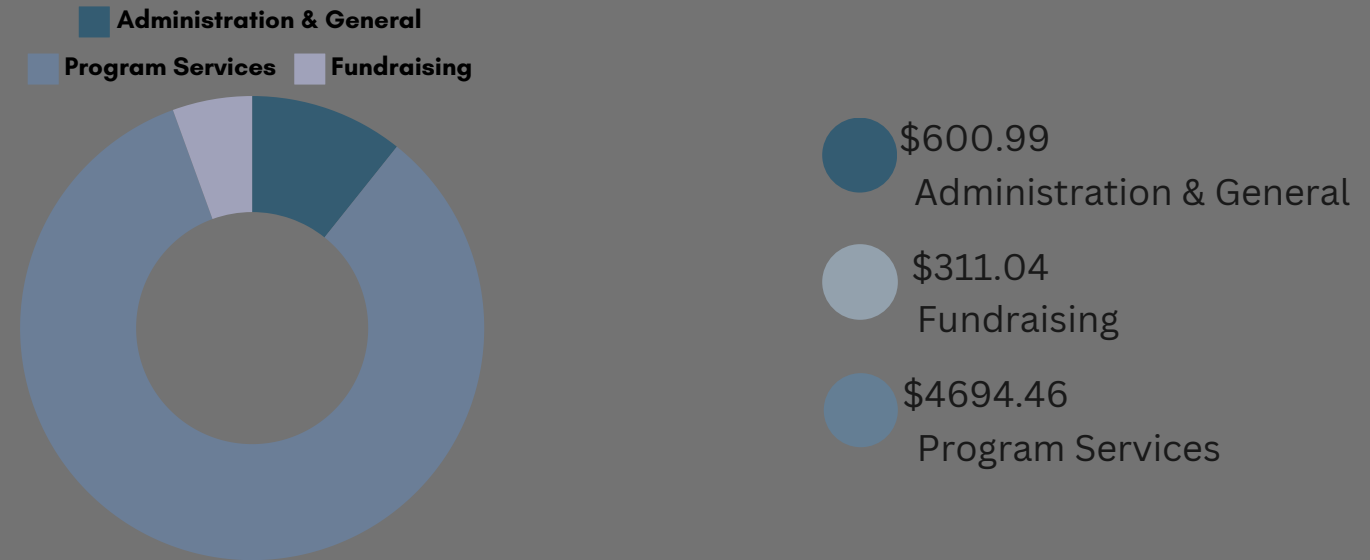
The way this money was used can be broken down into 3 categories: Administrative and General, Fundraising, and Program Services. The Administrative and General account for a major part of our spending. While this number is high, we do not anticipate that it will continue to take up as much of our budget as many administrative items, such as the fee to register the organization, or the cost of setting up a website, are one time fees.

In addition to Administrative expenses we also spent funds on fundraising items such as T-shirt, banners and table cloths with the Moon of Hope logo. Lastly, the remainder of our funds were spent on Social Services which came in the form of our three major outreach events in 2023: The Back to School Bash, Thanksgiving Meal Distribution, and The Christmas Toy Drive.

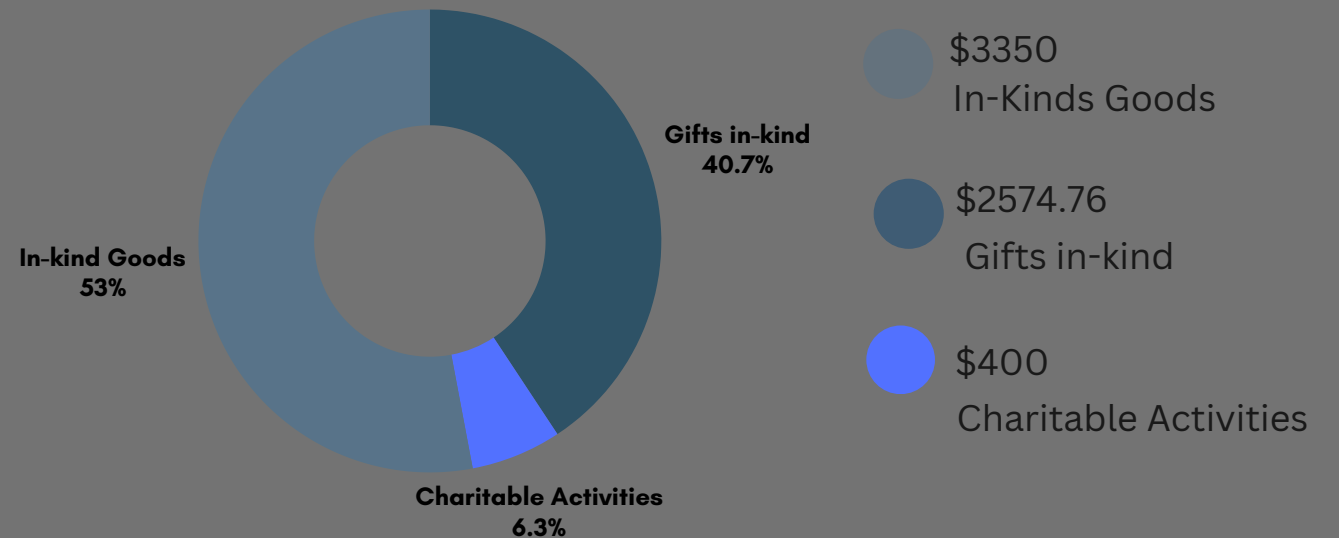
Each one of these events served as a way for us to inform the community of our organization's existence, while also relieving food and financial insecurities for members of the PBC community. While our initial organizational start up costs have been a significant part of our budget in 2022 & 2023, this will not continue to be the case and our goal is to spend the majority of our 2024 budget on Social Services.

Breakdown of Expenses & Revenue

Expenses



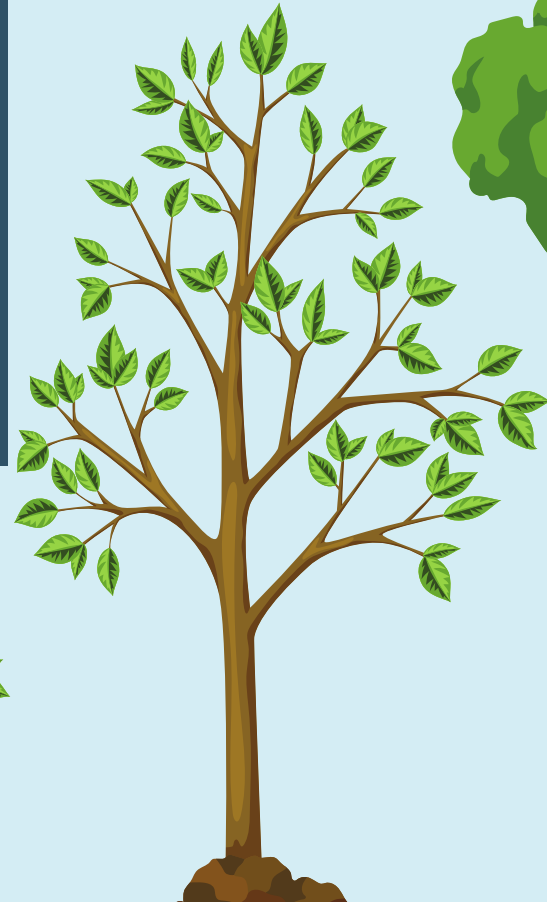
Revenue



Events of the year

We invested the majority of our resources into big events like back-to-school, Thanksgiving, and Christmas.

The commitment of resources to these flagship events not only ensures the fulfillment of our organizational objectives but also strengthens our community engagement and impact.





MAKING AN IMPACT

Year of 2023 by the Numbers

Back to School

In our commitment to fostering educational opportunities and community engagement last year we served **265 children** in the most vulnerable area in Palm Beach County. Our Back-to-School event aimed to address the educational needs of children facing various challenges, ensuring they are equipped for academic success.



Thanksgiving

40 + families, received a thoughtful package, carefully curated to include essential food items, seasonal favorites, and other necessities. This initiative not only alleviated immediate concerns but also resonated as a symbol of compassion and solidarity within the community.

Christmas

We provided **49+ families** with a special Christmas experience, ensuring they felt the warmth and spirit of the season.



Outreach & Referral

In collaboration with fellow non-profit organizations, we have successfully facilitated the referral of **17 individuals** to other non-profit entities, strategically addressing a spectrum of challenges they faced.

Program and Services

- Social Services - school supplies, food distribution, holiday programs, utility assistance, rent assistance, counseling and therapy services and referral programs.
- Education - community outreach, education on domestic violence and sexual abuse.



Photos From Moon of Hope Events



Beneficiary Story

Pastor Lesly Romelus, a dedicated Haitian pastor, has faithfully served his community in the Mangonia West Palm Beach area for over 17 years. When our team made the strategic decision to extend assistance during the Thanksgiving season to the vulnerable population residing in the 33407 zip code, we were directed to Pastor Jean as a trusted point of contact.

Expressing genuine enthusiasm, Pastor Lesly Romelus welcomed our initiative to support families in need, specifically within the Mangonia area through his church, L'église Chrétienne Haïtienne Grace Divine. His gratitude was palpable as he shared that this marked the first time in his 17 years of service where an organization had thoughtfully considered and reached out to assist his church in such a meaningful way.

Pastor Lesly's appreciation underscores the impact of our outreach efforts and affirms the importance of targeted and thoughtful engagement with community leaders to ensure the most effective and meaningful support reaches those in need.



Our Most Significant Event Supporters

2022-2023

These organizations have consistently emerged as an integral support system for our organization, demonstrating commitment to collaboration and philanthropy. Their consistent willingness to engage in collaborative efforts reflects a commendable commitment of shared goals. We would like to express our sincere gratitude for the trust they place in our mission, which is dedicated to addressing the critical issues of domestic violence and sexual abuse affecting women and children within our community. Their collaboration underscores the significance of aligning with philanthropic partners who share our commitment to social responsibility, enhancing our collective ability to combat societal challenges with strategic and impactful initiatives.





THE MOON OF HOPE

A VOICE FOR THE VOICELESS

The Moon of Hope mission is to combat domestic violence and sexual abuse of women and children through education, advocacy, support, empowerment, and improving the living standard for the vulnerable.

*2080 Greenview Shores Blvd
Wellington FL 33414
Tel: 719-400-3710
Moonofhope.org*